

DAWN PATROL TO BURLINGTON

The Saturday Dawn Patrol flight is a longstanding tradition and one of the highlights of the National Stearman Fly In. We encourage all pilots to participate in this event.

The Southeast Iowa Regional Airport (KBRL) is located 2 miles southwest of Burlington and actually right on the south edge of West Burlington. The airport is 32.8 miles from Galesburg on a heading of 251 degrees. There are two paved runways 18/36 and 12/30. An unmarked but easily identifiable grass landing area is also available, parallel and east of 18/36 toward the south end.

Published landing pattern for the hard surface runways are RH – 18 / LH – 36, RH – 12 / LH – 30. For those using the grass area the pattern will be reversed: Grass 18 is Left Hand - - Grass 36 is Right Hand. Keep your patterns tight and do not overshoot base to final. BE SURE TO OBSERVE THE LANDING PATTERNS FOR EACH RUNWAY!

All Stearmans should be prepared for flight and a take-off at official sunrise. Those Stearmans equipped with lights and legal for night flight are requested to remain on the ground until official sunrise and take-off with the other Stearmans.

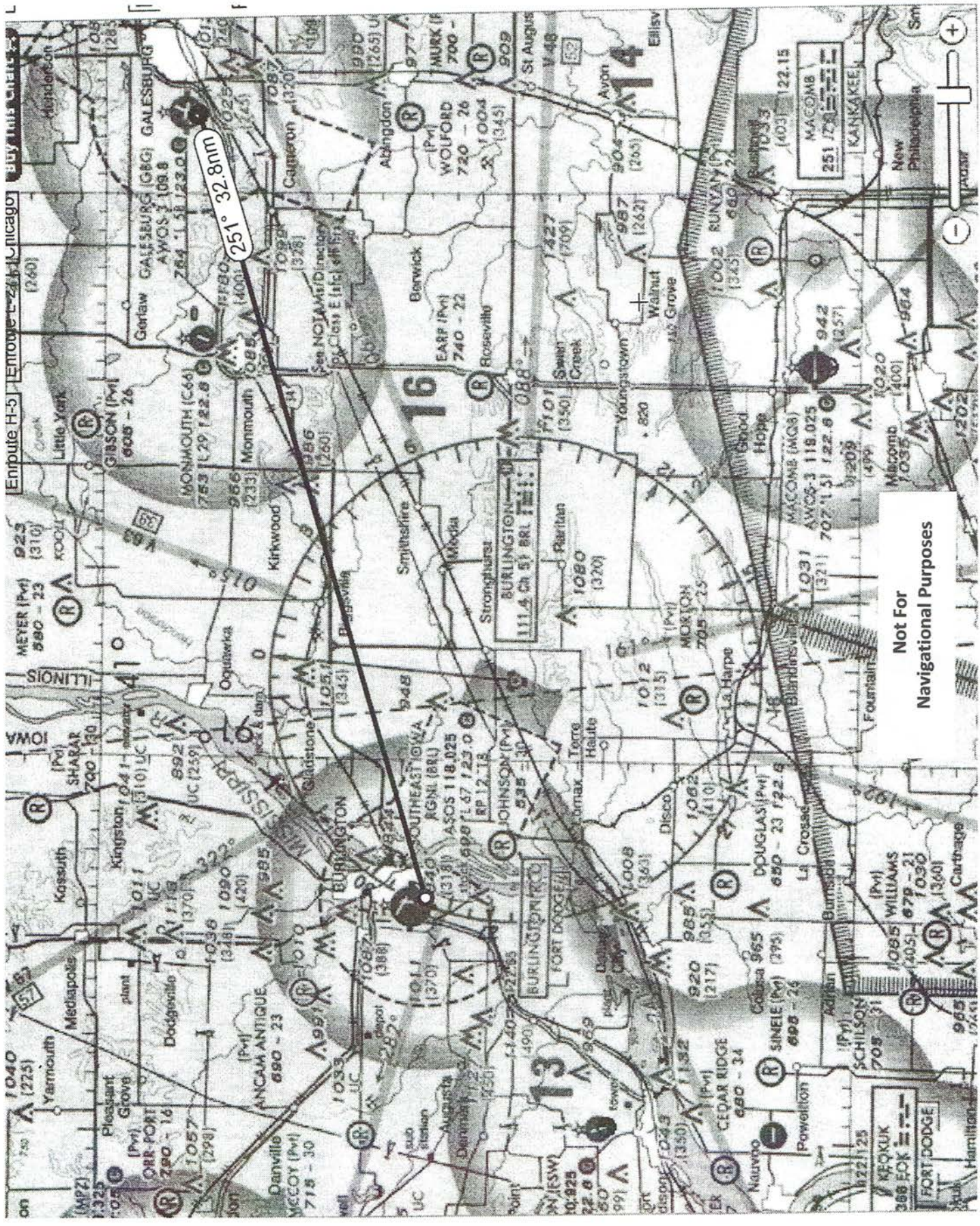
After take-off Stearmans should form up in loose formation groups (recommend 4-6 airplanes) or fly individually and fly around the city of Galesburg in a left turn pattern for one circuit and then proceed west to Burlington. We have been asked to overfly Burlington to let everyone know we are there. The bridge over the Mississippi River into Burlington makes the perfect crossing spot since it is north of the airport and a left turn from there will put us right over town and into entry for the pattern.

Formation landings are NOT PERMITTED. Formations should circle overhead and break formation to space for individual landing. PARKING will be on the south part of the main ramp with adjoining grass area used as needed. There will be ground personnel to direct and aid with parking.

Departure will be individually or as arranged by each pilot. The parking area may be open to the public so use caution when starting and taxiing.

FLY SAFE – FLY COURTEOUSLY

REMEMBER – THE FEDS ARE EVERYWHERE!



251° 32.8nm

Not For
Navigational Purposes

Enroute H-5 Enroute L-2 Chicago

+

-

+

-

+

-

+

-

+

-

+

-

+

-

+

-

+

-

+

-

+

-

+

-

+

-

+

KBRL 123.0

ASOS 118.025

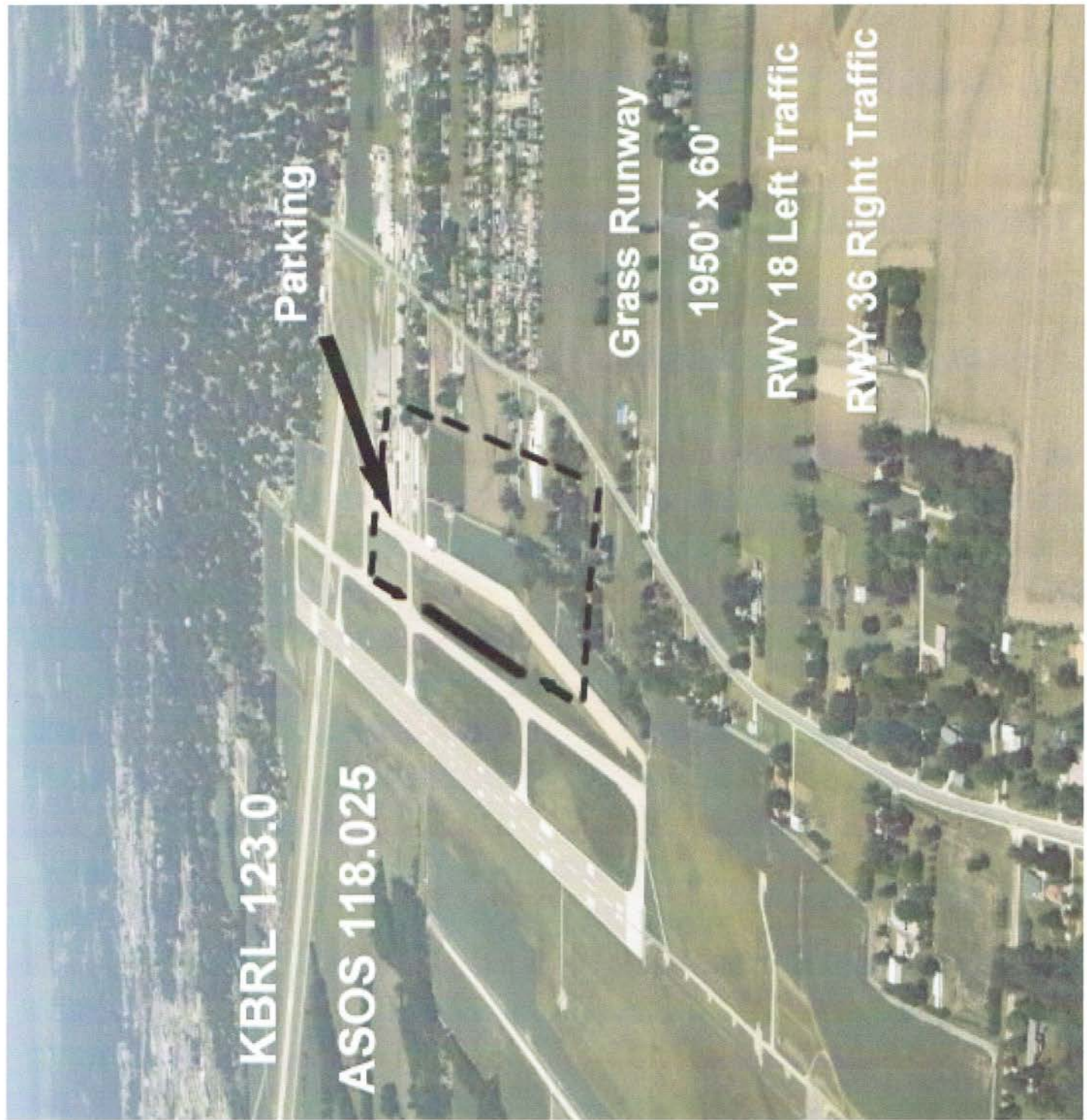
Parking

Grass Runway

1950' x 60'

RWY 18 Left Traffic

RWY 36 Right Traffic

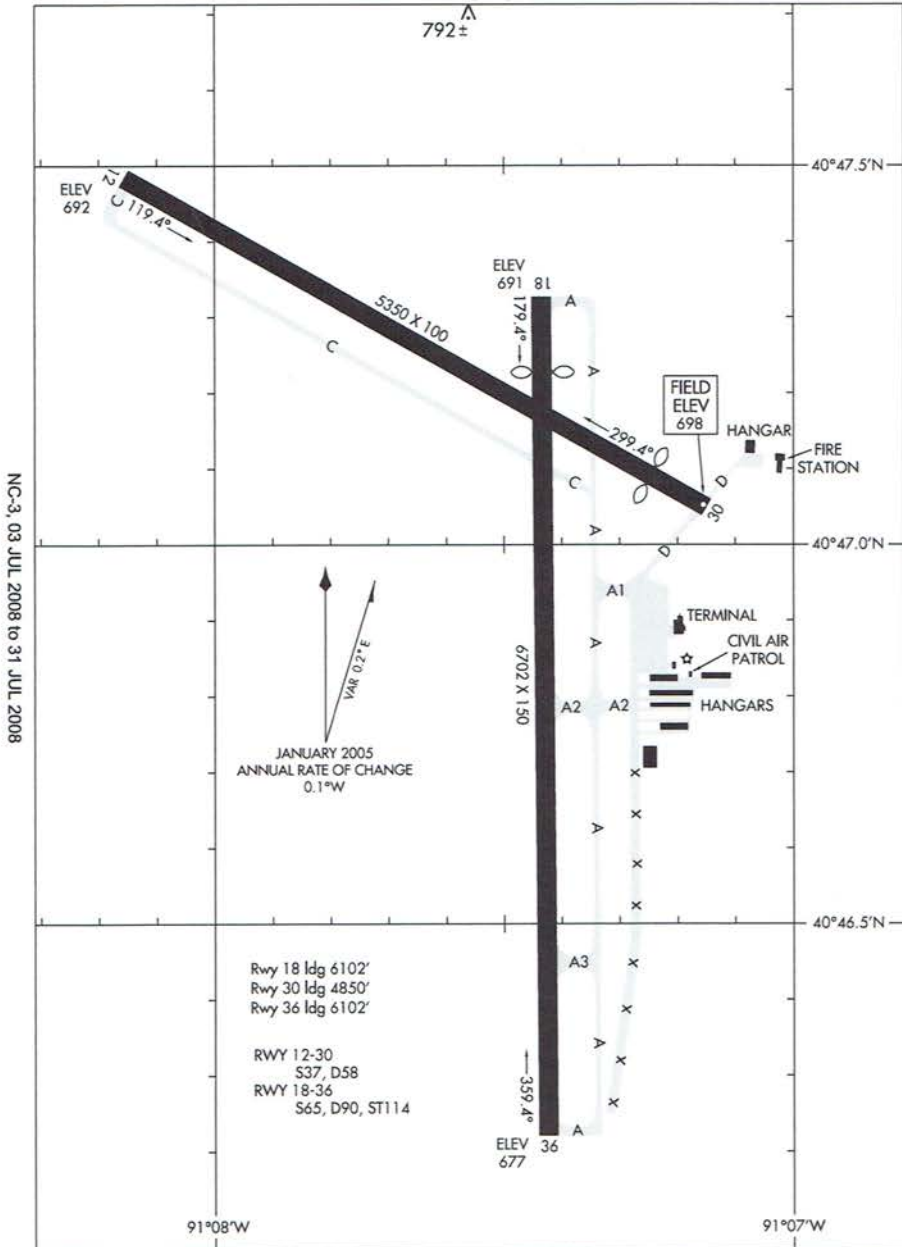


07354

AIRPORT DIAGRAM

AL-69 (FAA)

BURLINGTON/SOUTHEAST IOWA RGNL (BRL)
BURLINGTON, IOWA



NC-3, 03 JUL 2008 to 31 JUL 2008

NC-3, 03 JUL 2008 to 31 JUL 2008

AIRPORT DIAGRAM

07354

BURLINGTON, IOWA
BURLINGTON/SOUTHEAST IOWA RGNL (BRL)